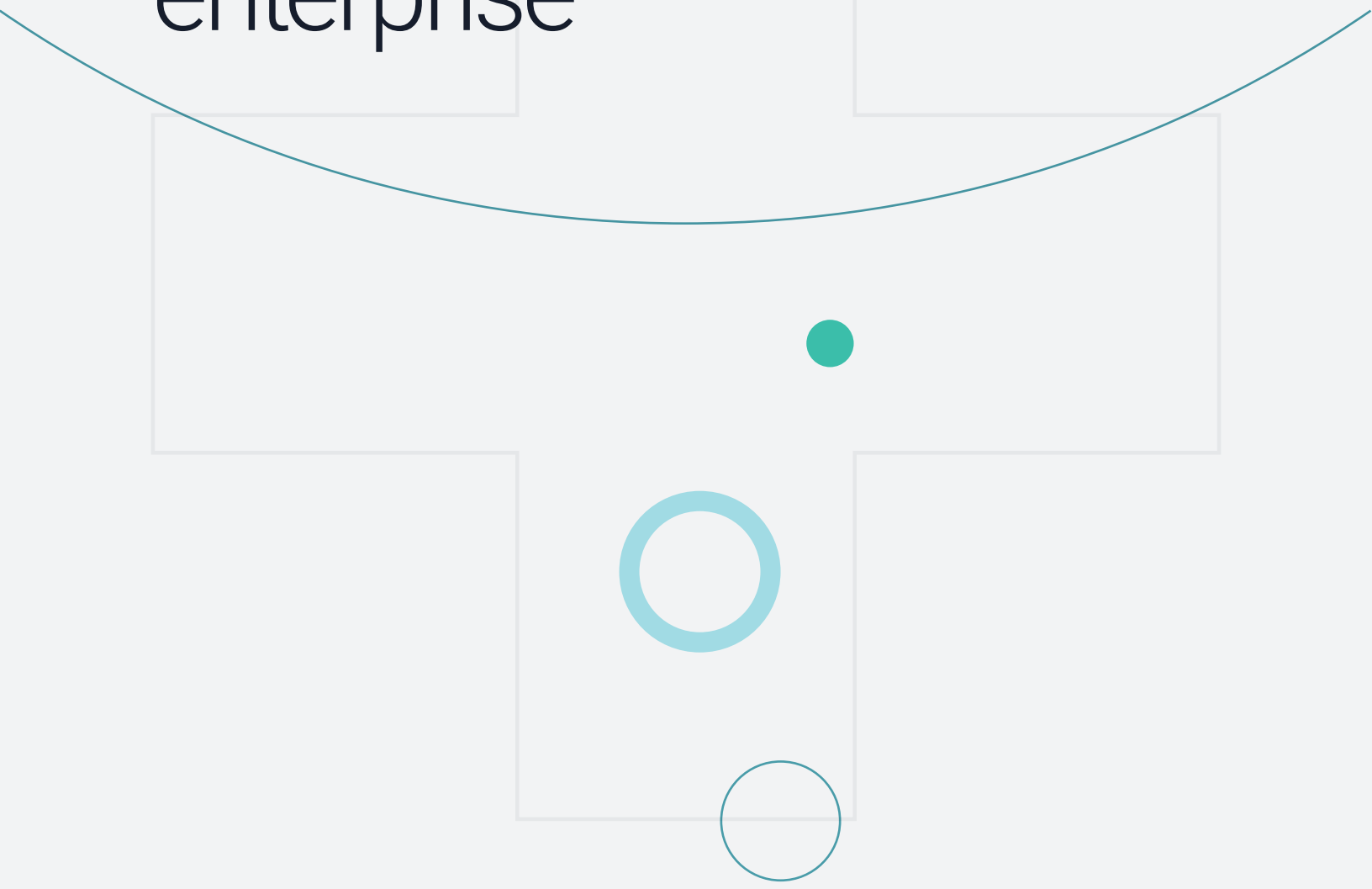
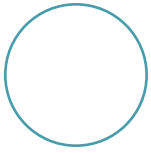


CASE STUDY

Banner Health

Building the future of
the connected health
enterprise

A decorative graphic consisting of a thin teal arc that curves across the page. Below the arc are several light gray rectangular outlines of varying sizes, some containing teal circles of different sizes. A solid teal circle is positioned to the right of the arc's center.



Executive Summary

Banner Health is using the Innovaccer Health Cloud to unify patient data across multiple systems, simplify workflows across teams, and support its population health management strategy for more than 1 million lives. With the Innovaccer platform, Banner is not only transforming patient care, but also driving significant savings in its IT operating expenses. Indeed, Banner has achieved \$4 million in savings from rationalizing various population health solutions with Innovaccer's comprehensive suite and a 70% reduction in IT infrastructure cost by moving to a SaaS-based model.

Overview Banner Health is one of the top health systems in the country with more than 30 hospitals, including three academic medical centers. The Phoenix, Arizona-based system grew rapidly over the past 20 years to become one of the nation's top five health systems spread across six states with more than 50,000 employees.

This remarkable growth came with the challenges of a distributed infrastructure. Although the clinical infrastructure at Banner Health is connected by the Cerner Millennium electronic health record (EHR), the Banner Health Network and affiliate organizations have a variety of disconnected EHR systems.

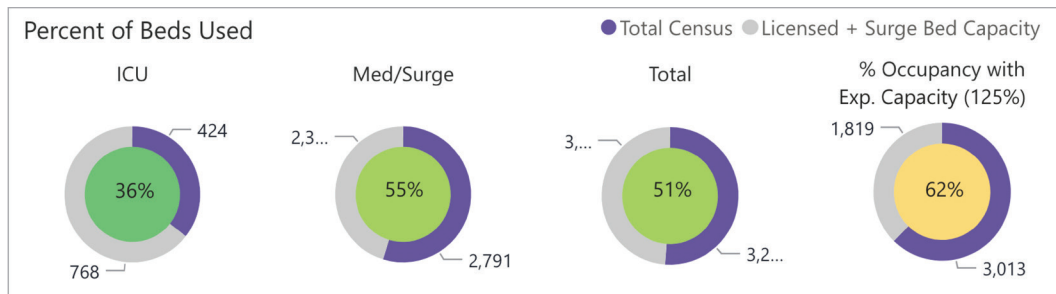
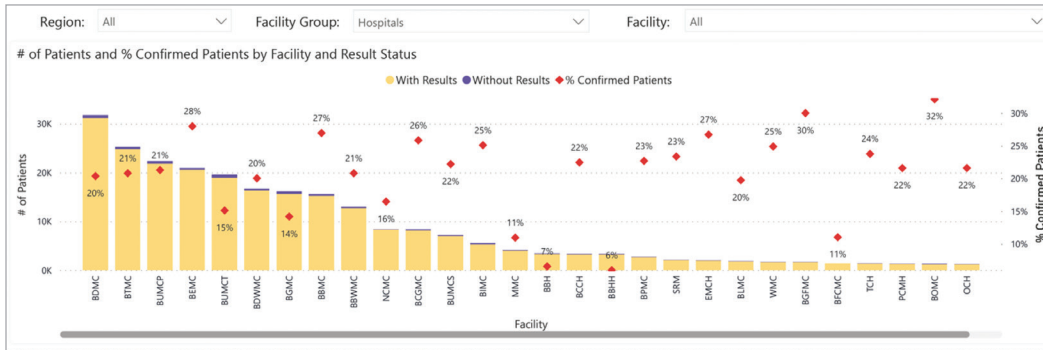


Scaling COVID-19 operations with agility

When the COVID-19 pandemic hit, Banner Health quickly assessed what it needed in order to stay on top of their operations to help patients in the communities it serves. Soon the Banner team realized that their clinical infrastructure was not scaling to meet their needs to manage through a pandemic like COVID-19. After assembling data from multiple systems including Banner Health’s clinical, supply chain, financial, and legacy on-premise data warehouses, the organization found that the quality and scalability of its data and the speed with which it was able to provide actionable insights to business partners did not meet changing needs in the pandemic.

That is how Banner Health’s journey with Innovaccer started.

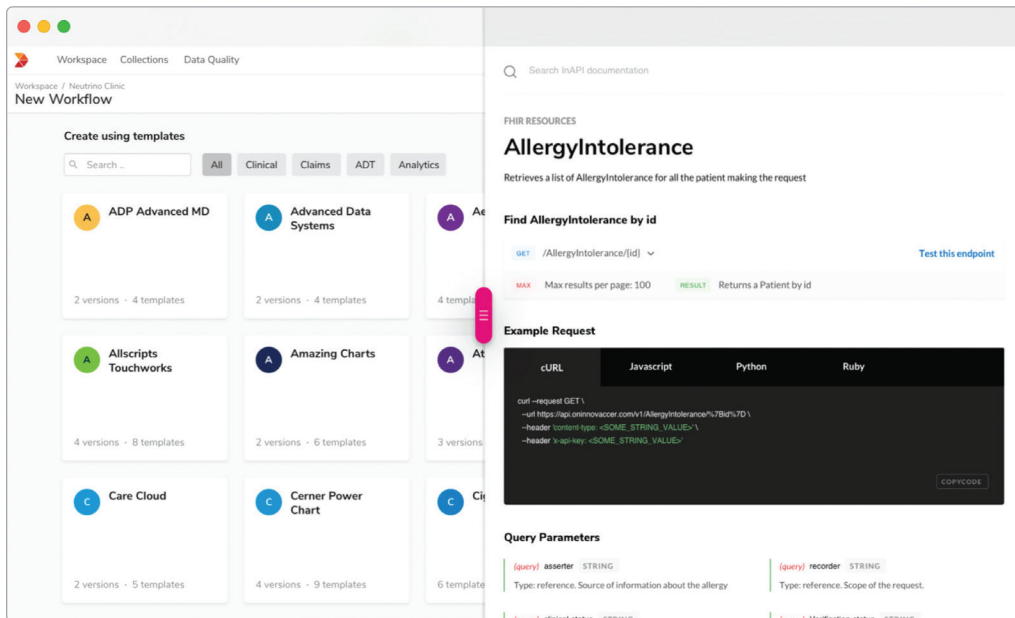
Within five weeks, Innovaccer ingested, cleaned, and normalized Banner Health’s clinical, financial, supply chain, and administrative data in its Data Activation Platform and powered the cloud infrastructure to refresh reports every five minutes. The highly actionable reports covered the on-hand supply of PPE, medication inventories, and lists of patients still in need of pre-procedural COVID-19 testing, and more key metrics. In total, more than 400 operational leaders across 30 Banner Health hospitals logged into these dashboards daily to stay on top of their responses to COVID-19.



Rationalizing value-based care operations

Banner Health Network manages more than 1 million lives at-risk across geographies, risk profiles, and provider practices. Banner Health previously used value-based care solutions combined with offerings from other vendors to provide risk, quality, and care management capabilities.

The problem? Using four or five disparate systems without a common data fabric made it extremely difficult to track value measures. The Innovaccer Health Cloud allowed Banner to create a 360-degree view of all data related to cost, utilization, risk, and quality. Innovaccer then consolidated the primary care provider and care coordination staff applications using one unified patient record. The result was a common view and consistent data, which became the single source of truth.



A more scalable, flexible enterprise data fabric

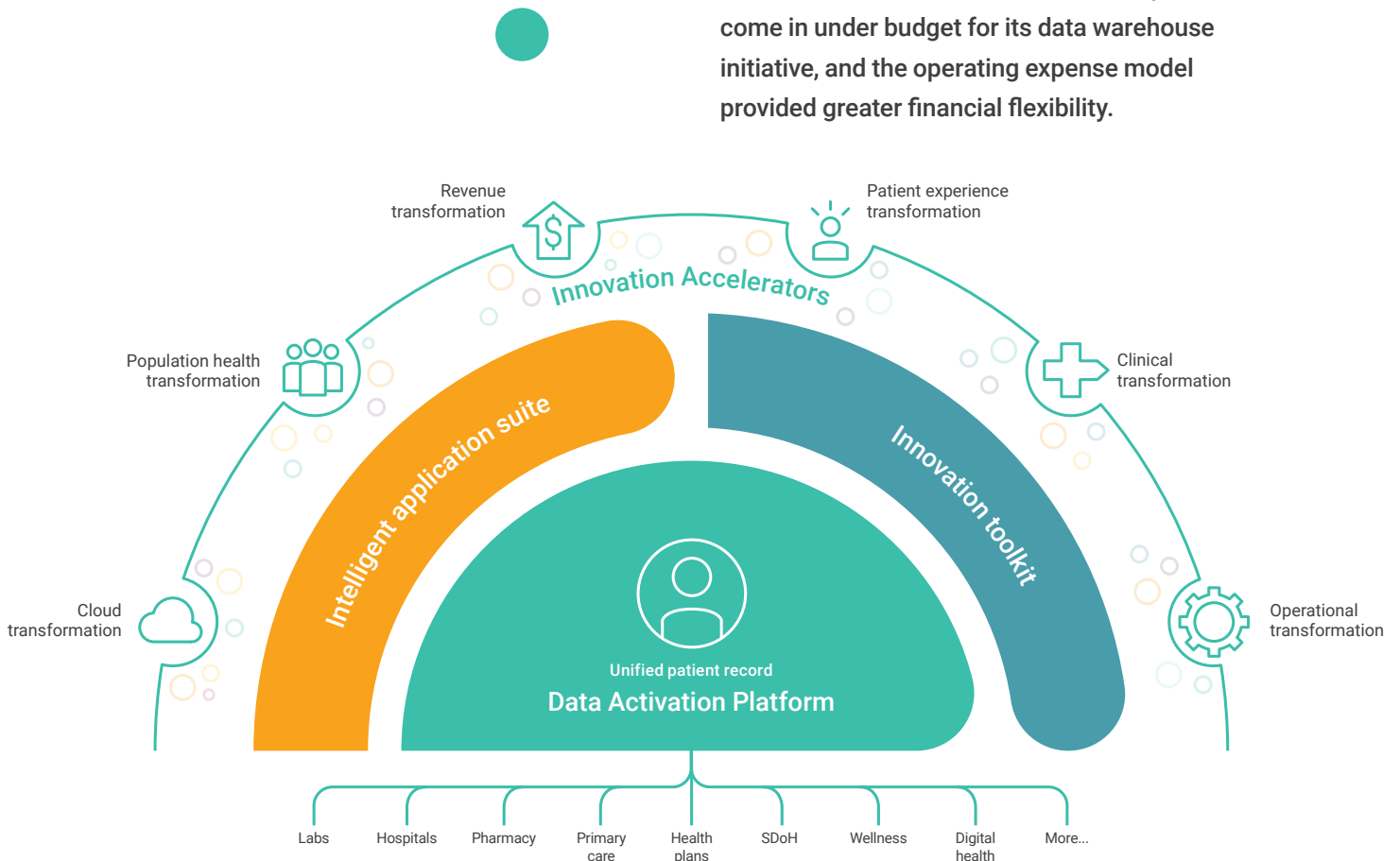
Within six months, Innovaccer proved to Banner Health that its Data Activation Platform could ingest and normalize a variety of healthcare data and make it accurate and actionable while reducing operating expenses and accelerating time to value. As a result, Banner decided to turn to Innovaccer to tackle its most complex challenge: the need for a single enterprise data fabric. The decision rested on several key factors:

The Innovaccer Health Cloud's time to value was unmatched given its pre-built connectors, healthcare data model, and deep quality monitoring.

The Data Activation Platform in the Innovaccer Health Cloud already held more than 25% of Banner Health's data.

Innovaccer's vision of enterprise analytics at scale aligned with the Banner Health vision; not analytics in remote R&D labs, but the analytics that complete the feedback loop with clinicians and operators.

The Innovaccer Health Cloud would help Banner come in under budget for its data warehouse initiative, and the operating expense model provided greater financial flexibility.



Enterprise analytics and AI at scale

Innovaccer discovered that Banner Health had 2,000–3,000 reports in its legacy system. By utilizing full-time report writers, it would double the number of reports generated. Innovaccer also recognized that the same key performance metrics were configured in multiple ways across various reports, leading executives to question the figures.

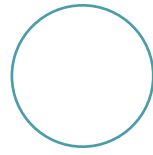
To improve key performance metric reporting, Innovaccer is helping Banner Health scale analytics and artificial intelligence (AI) in two ways:

Innovaccer allows Banner Health staff to view metrics—be it cost, quality, risk, utilization, operations, or clinical metrics—in a user-friendly library.

Innovaccer helps Banner Health with predictive modeling by providing data features and AI models. Innovaccer's Data Activation Platform allows data scientists to see unified data, blinded or not, with features to build their models rapidly on Innovaccer's data science workbench.



Once the models are perfected, the next step will be to publish the models, send them back for use, and collect feedback from Banner Health clinicians and care coordinators. Innovaccer's data science pipeline allows data scientists to publish their model in just one click using an application programming interface (API). These APIs can be configured as needed to prioritize tasks for clinicians and care coordinators.



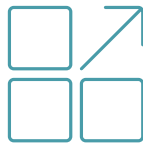
Outcomes

Taken together, the Innovaccer Health Cloud helped Banner Health:

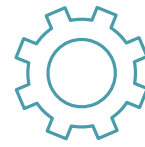
Save more than

\$4M

per year in value-based care tools and licenses

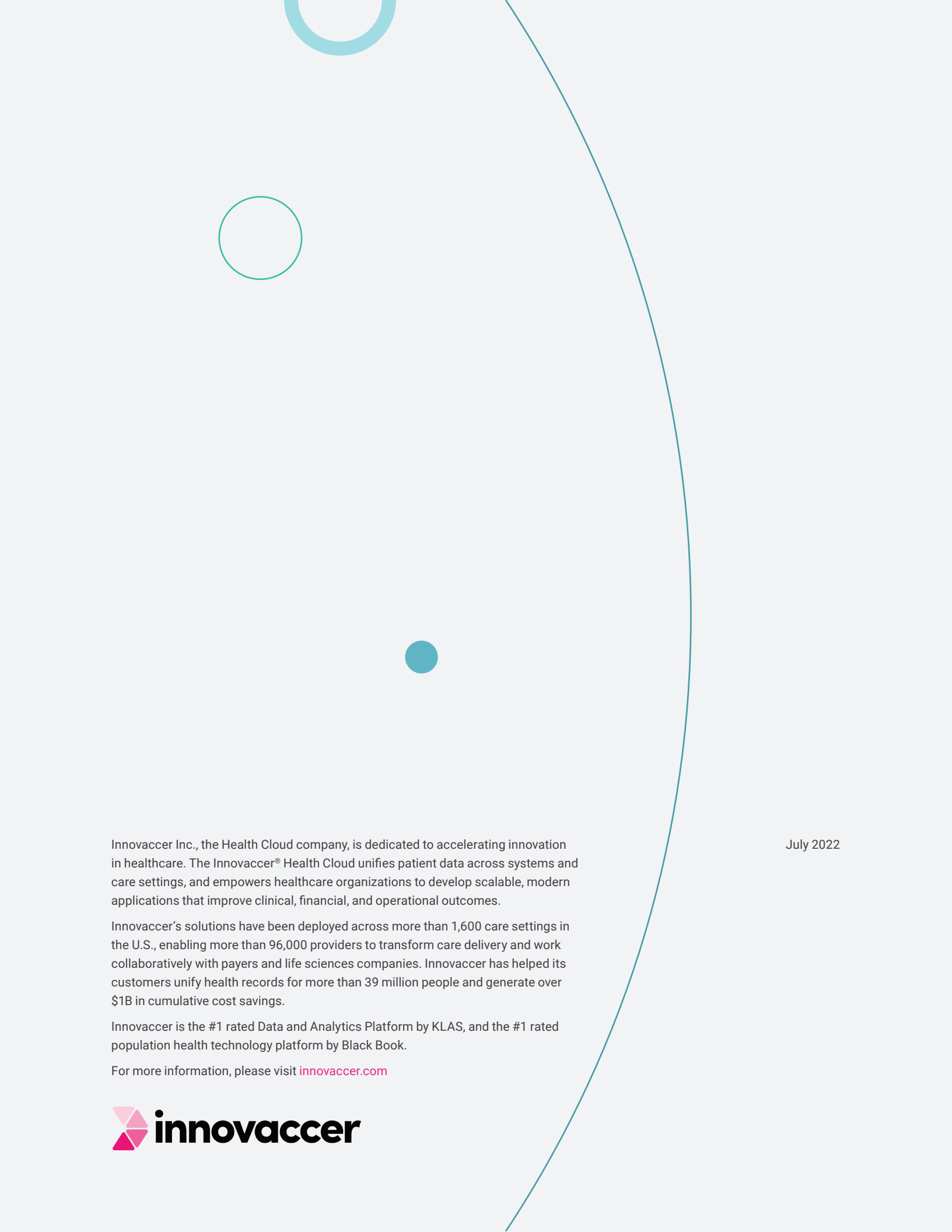


Achieve true transparency of metrics to strengthen their negotiations on value-based performance incentives with payers



Automate processes to reduce turnaround time and effort for staff in chasing care gaps, recapturing codes, and avoiding unnecessary utilization





Innovaccer Inc., the Health Cloud company, is dedicated to accelerating innovation in healthcare. The Innovaccer® Health Cloud unifies patient data across systems and care settings, and empowers healthcare organizations to develop scalable, modern applications that improve clinical, financial, and operational outcomes.

Innovaccer's solutions have been deployed across more than 1,600 care settings in the U.S., enabling more than 96,000 providers to transform care delivery and work collaboratively with payers and life sciences companies. Innovaccer has helped its customers unify health records for more than 39 million people and generate over \$1B in cumulative cost savings.

Innovaccer is the #1 rated Data and Analytics Platform by KLAS, and the #1 rated population health technology platform by Black Book.

For more information, please visit [innovaccer.com](https://www.innovaccer.com)

July 2022

